

SUITE 100 AVAILABLE FOR LEASE

\$2.75/SQFT • 8,570 SQFT



ABOUT THE SPACE

Located on the first floor in the Eureka Building, Suite 100 is an open-concept corner suite with large windows multiple private offices + corporate kitchen and lounge.

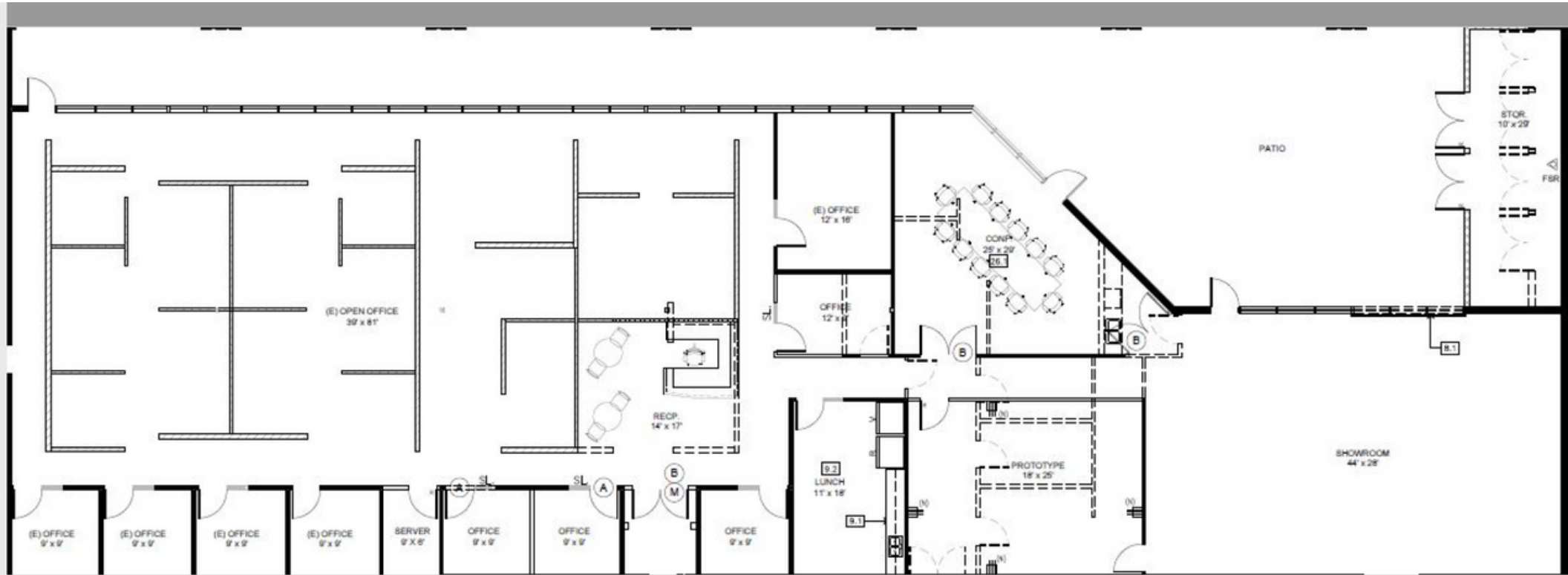
samantha@euerkahub.com • 949.439.7677

KEY FEATURES

- 9 Private offices
- 2 Conference rooms
- Move-in ready
- 4,000 SqFt Patio
- Corporate kitchen
- Carpeted and concrete floors
- Partitioned offices + open floorplan
- Abundance of natural light
- Wired for multi-media

SUITE 100 FLOOR PLAN

\$2.75/SQFT • APPROX 8,570 SQFT



(E) OFFICE
9' x 9'

(E) OFFICE
9' x 9'

(E) OFFICE
9' x 9'

(E) OFFICE
9' x 9'

SERVER
9' x 9'

OFFICE
9' x 9'

OFFICE
9' x 9'

OFFICE
9' x 9'

LUNCH
11' x 18'

PROTOTYPE
18' x 25'

(E) OFFICE
12' x 18'

OFFICE
12' x 18'

RECP.
14' x 17'

CONF.
25' x 25'

PATIO

SHOWROOM
44' x 28'

STOR.
10' x 20'